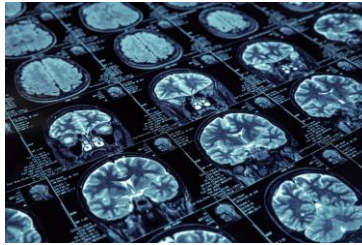


A Pilot Study to Investigate Changes in the Brain in Patients with Wilson Disease using MRI

Patients with Wilson Disease are being recruited for a Pilot study to evaluate brain changes using MRI.



This study is being sponsored by the Wilson Disease Association.

We seek to investigate changes in the brain in patients with Wilson disease using MRI, and to correlate findings with clinical and cognitive assessments. Participation will involve an MRI scan lasting approximately 1 hour, as well as cognitive and neuropsychiatric assessments.

There is only 1 visit required. Total time commitment will be about 2.5 hours.

Reimbursement for your transportation and parking will be up to \$100.

You may be eligible to participate, if you meet the following criteria:

- ◆ Male or female, aged 18-75 years' old
- ◆ Have a diagnosis of Wilson Disease
- ◆ Are fluent in English (due to standardized assessments)
- ◆ Must pass the MRI metal screening
- ◆ Are not claustrophobic

To discuss possible participation please contact Yale New-Haven Hospital, Neurology Department by calling 203-785-2185